



**airPRISM®**

5 GHz, 3x30° HD Sector Antenna

Model: AP-5AC-90-HD

Powerful Performance for High-Density Areas

3 x 30° Beamwidth Coverage in a MultiPoint Network

Efficient Footprint for Reduced Tower Costs

# Overview

Ubiquiti Networks introduces an innovative sector antenna for your Point-to-MultiPoint (PtMP) applications, the airPrism<sup>®</sup> 5 GHz 3x30° HD Sector Antenna.

The airPrism antenna features significant advances in noise isolation and beam performance to complement the Rocket<sup>®</sup>5ac Prism<sup>™</sup> radios (not included) for co-location deployments.

## Breakthrough Design

Three Rocket5ac Prism radios mounted on a single airPrism antenna maximizes throughput in an efficient tower footprint, minimizing installation and tower costs.

## Powerful Performance

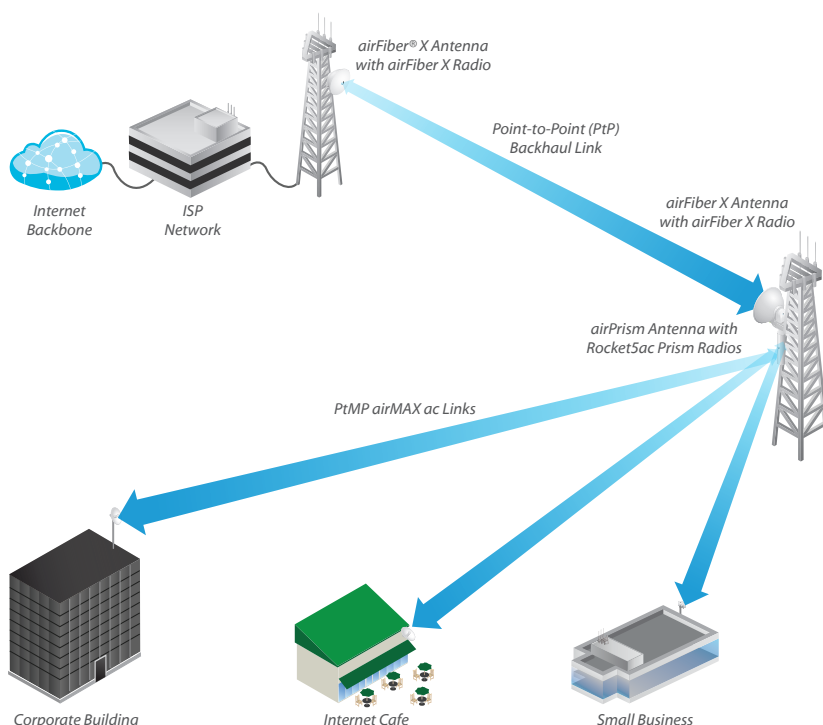
Highly resistant to noise interference, the airPrism antenna provides superior beam performance in high-density areas for high-capacity, multipoint networks.

## Plug and Play Integration

The airPrism antenna and Rocket5ac Prism radios have been designed to seamlessly work together. Every airPrism antenna has three built-in Rocket radio mounts, so installation requires no special tools.

Snap the three Rocket5ac Prism radios securely into place and mount the antenna for your PtMP link.

## Application Example



# Beamwidth

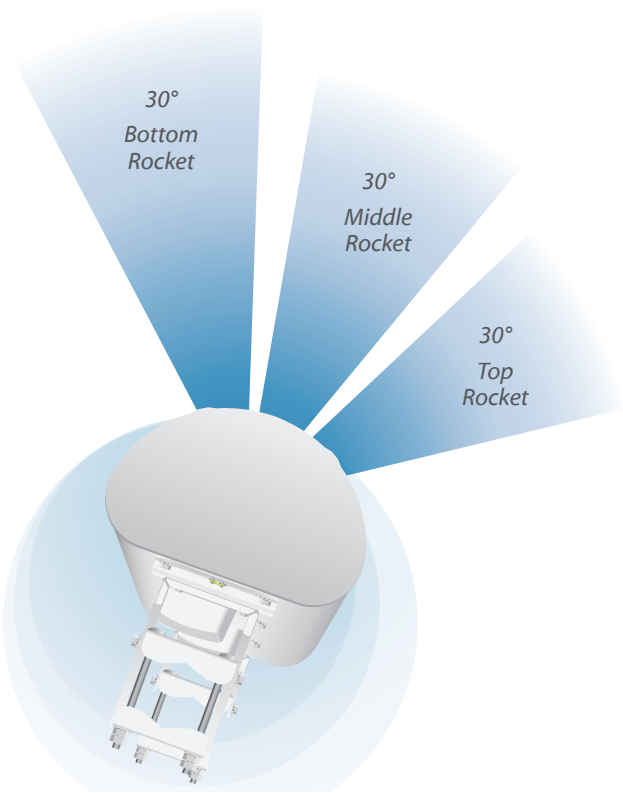
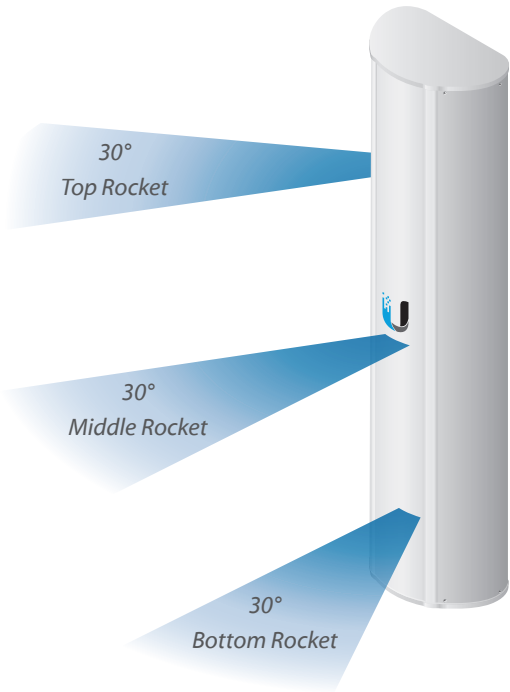
The three Rocket5ac Prism radios are installed at the top, middle, and bottom of the airPrism antenna. Each radio independently transmits and receives within its corresponding 30° beamwidth.

Refer to the diagrams below for a visual representation of the beamwidth coverage.

# Channel Offset

The size of the required offset depends on the channel width.

Channel Width	Separation
10 MHz	20 MHz
20 MHz	30 MHz
30 MHz	50 MHz
40 MHz	60 MHz



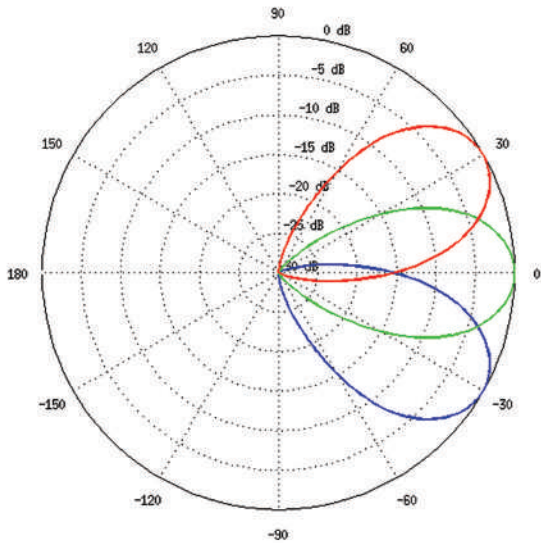
# AP-5AC-90-HD Specifications

Antenna Characteristics	
Dimensions*	322.6 x 201.5 x 1300 mm (12.7 x 7.93 x 51.18")
Weight**	13.1 kg (28.9 lb)
Frequency Range	5.15 - 5.85 GHz
Gain	22 dBi
HPOL Beamwidth	3 x 30° (6 dB)
VPOL Beamwidth	3 x 30° (6 dB)
Electrical Beamwidth	8°
Electrical Downtilt	2°
Max. VSWR	1.75:1
Polarization	Dual-Linear
Cross-Polarization Isolation	30 dB Min.
Interfaces	(6) RP-SMA Connectors (Weatherproof)
Compatible Radio	Rocket5ac Prism, model R5AC-PRISM
Wind Loading	534 N @ 200 km/h (120 lbf @ 125 mph)
Wind Survivability	200 km/h (125 mph)
Mounting	Universal Pole Mount, Rocket Bracket, and Weatherproof RF Connectors Included
ETSI Specification	EN 302 326 DN2
Certifications	CE, FCC, IC

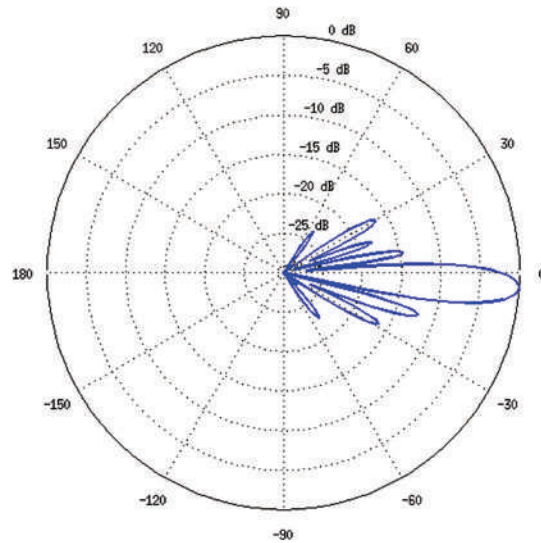
\* Dimensions exclude pole mount and Rocket5ac Prism (Rocket5ac Prism sold separately)

\*\* Weight includes pole mount and excludes Rocket5ac Prism (Rocket5ac Prism sold separately)

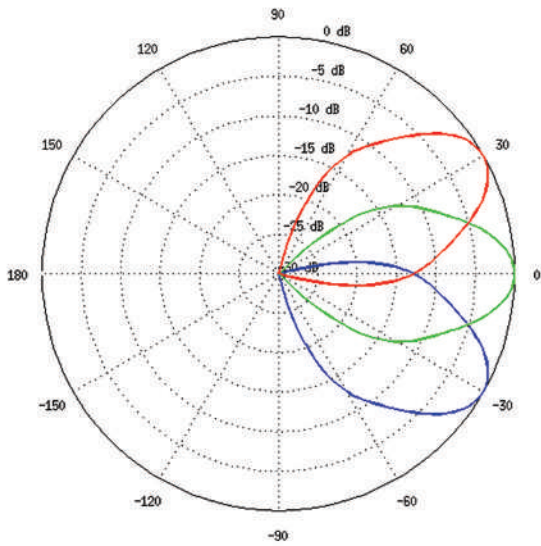
Vertical Azimuth



Vertical Elevation



Horizontal Azimuth



Horizontal Elevation

