

MULTI-PURPOSE LINES OF COMMUNICATION  
SCANNING & TESTING DEVICE

# INSTRUCTION MANUAL **LPCT019**

## ***WIRE TRACKER***

**Your wire finder expert**



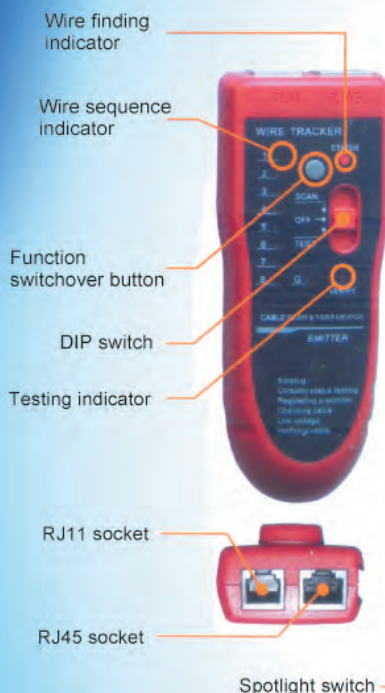
**NEWS**

# WIRE TRACKER!

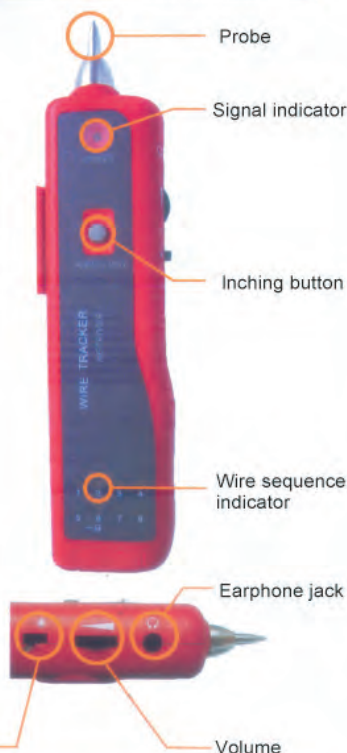
*Find wire on all types of connected **operating** Ethernet switch/Router/PC terminal*

The list of package

## Parts of emitter



## Parts of receiver



## Accessories

RJ11 telephone cable

RJ45 network cable



Cable with crocodile clamp



Earphone



9V battery

# Telephone wire finding function

## LPCT019



1. Directly insert telephone wire with RJ11 plug into the RJ11 socket of the wire tracker's emitter;
2. Push DIP switch of emitter to position of "SCAN" then wire finding indicator "STATUS" flashes meaning normal work of emitter;
3. Press downward the inching button, use the probe of receiver to find target wire at the other end;
4. During testing, function switchover button can be pressed for switchover of dual-tone.

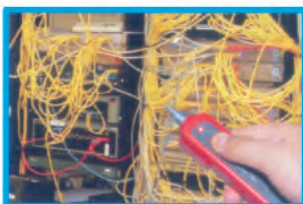
*Rapidly find the target wire from  
among plenty of*  
**telephone wires**

### CASE I

Find wire on switch



Connect emitter with port of  
telephone wire to be found



Find it with receiver at the other end

### CASE II

Find wire on patch panel



Connect emitter with port of  
telephone wire to be found



Find it with receiver at the other end

Compare the volume of the "tout" sound and the **brightness** of the signal indicator.  
Then you can find the target wire which has the highest volume and brightest indicator.



# Network wire finding function

**LPCT019**



1. Directly insert network wire with RJ45 plug into the RJ45 socket of the wire tracker's emitter;
2. Push DIP switch of emitter to position of "SCAN" then wire finding indicator "STATUS" flashes meaning normal work of emitter;
3. Press downward the inching button, use the probe of receiver to find target wire at the other end;
4. During testing, function switchover button can be pressed for switchover of dual-tone.

*Rapidly find the target wire from  
among plenty of  
**network wires***

## CASE I

Find wire on router



Connect emitter with port of  
network wire to be found



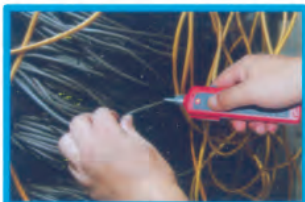
Find it with receiver at the other end

## CASE II

Find wire on net bar



Connect emitter with port of  
network wire to be found

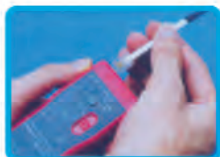


Find it on the switch

Compare the volume of the "tout" sound and the **brightness** of the signal indicator.  
Then you can find the target wire which has the highest volume and brightest indicator.

# Electric wire finding function

**LPCT019**



1. Directly insert telephone wire with crocodile clamp and RJ11 plug into the RJ11 socket of the wire tracker's emitter;
2. Push DIP switch of emitter to position of "SCAN" then wire finding indicator "STATUS" flashes meaning normal work of emitter;
3. Press downward the inching button, use the probe of receiver to find target wire at the other end;
4. During testing, function switchover button can be pressed for switchover of dual-tone.

*Rapidly find the target wire from  
among plenty of  
**network wires***

## CASE

Note: The equipment is prohibited to be used on heavy-current wires



Connect emitter with  
electric wire to be found



There is no electric drill required!!!



How to find the wire from among so many wires?  
It is so slow by using a multimeter.

Compare the volume of the "tut" sound and the **brightness** of the signal indicator.  
Then you can find the target wire which has the highest volume and brightest indicator.



# Network wire

## Collation function

**LPCT019**



1. Insert RJ45 plug at two ends of the network wire into the corresponding sockets at emitter and receiver.
2. Push function switchover button on emitter to the position of "TEST", testing indicator "VERIFY" flashes meaning normal work of emitter.
3. According to 16 wire sequences, judge the characteristics of short-circuit, breaking circuit, open circuit and crossing.
4. During testing, function switchover button can be pressed for switchover of fast and slow levels.

## *Network wire sequence collation*

### CASE

Note: The equipment is prohibited to be used on heavy-current wires

Support direct wire collation  
of operating switch



It's so simple that there is  
no cable tester required  
for testing wire now

### It can take place of cable tester

It can rapidly test open circuit/short circuit and crossing through the 16 status indicators. The test result is accurate and the result is displayed clearly and directly.



Automatic scan mode, rapidly testing, It can test correspondingly double-twisted cables 1,2,3,4,5,6,7,8 and G,meanwhile,can judge wrong connection,short circuit and opencircuit.

### Open circuit or short circuit testing function

Push DIP switch on emitter to position of "TEST", and long press function switchover button on emitter for 2 seconds, "VERIFY" indicator will change "flash" to "lighting" insert the crystal plug with crocodile clamp into RJ11, clamp the two ends to be tested with crocodile clamps, in case of short circuit, "1" -shape indicator of emitter will light up, otherwise it will not light up, resistance of the line can be indicated by brightness of status indicators: the lighter the indicator, the smaller the resistance; the darker the indicator, the bigger the resistance.

### DC level testing function

Push DIP switch on emitter to position of "SCAN", and long press function switchover button on emitter for 2 seconds, "STATUS" indicator will turn off and "VERIFY" indicator flashes, insert the crystal plug with crocodile clamp into RJ11, clamp the two ends to be tested with crocodile clamps, in case that "STATUS" indicator lights up in red, it means the end clamped with red clamp is positive pole, in case that "STATUS" indicator lights up in green, it means the end clamped with red clamp is negative pole, electric level can be judged by brightness of the status indicators; the lighter the indicator, the smaller the resistance; the darker the indicator, the bigger the resistance.



Can test positive and negative pole of DC electric level

### Low voltage alarm function

Push DIP switch on emitter to position of "SCAN", in case that battery level is lower than 6.0V, "STATUS" and "VERIFY" indicators will light up at the same time, it means battery replacement is needed.

### Earphone function

In noisy environment, earphone can be used to prevent interference from the outside.



### Volume adjusting function

While find the wire, volume knob can be rotated for moderate level of sound.

### Spotlight function

You can easily work as usual while putting on the light switch at night and in the dark.



### Energy-saving

Inching switch can automatically delay power-off.  
The continuous lifespan of battery is over 50 hours.



### Applicable users:

Telecom post bureau/net bar/telecom engineering companies / network engineering companies/power supply/ army and other departments requiring wire.

### Applicable scope:

Wire engineering of telecom network and regular maintenance work; network line engineering of computer; other wire engineering and maintenance.

### Specification of product

Item	Specification	
Product name	Wire tracker	
Power supply	DC, 9V battery	
The max working current	Emitter	$\leq 10\text{mA}$
	Receiver	$\leq 30\text{mA}$
Signal transmission format	Multi-frequency impulse	
Signal output electric status	8Vp-p	
Distance of signal transmission	$\geq 3\text{km}$	
Appearance dimension	Emitter	126 X 49 X 34,mm
	Receiver	175 X 42 X 27,mm
	Whole set	270 X 165 X 45,mm
Weight	Emitter	0.060kg
	Receiver	0.072kg
	Whole set	0.420kg

### The list of package

1. Emitter	1 piece	6. Cable with crocodile clamp	1 piece
2. Receiver	1 piece	7. RJ45 network cable	1 piece
3. 9V battery	2 pieces	8. Instruction manual	1 piece
4. Earphone	1 piece	9. Toolkit	1 piece
5. RJ11 telephone cable	1 piece	10. Color box	1 piece