

Product Information

COPYRIGHT ©2018 Hangzhou Hikvision Digital Technology Co., Ltd.

ALL RIGHTS RESERVED.

Any and all information, including, among others, wordings, pictures, graphs are the properties of Hangzhou Hikvision Digital Technology Co., Ltd. or its subsidiaries (hereinafter referred to be "Hikvision"). This user manual (hereinafter referred to be "the Manual") cannot be reproduced, changed, translated, or distributed, partially or wholly, by any means, without the prior written permission of Hikvision. Unless otherwise stipulated, Hikvision does not make any warranties, guarantees or representations, express or implied, regarding to the Manual.

About this Manual

This Manual is applicable to Alarm Keypad.

The Manual includes instructions for using and managing the product. Pictures, charts, images and all other information hereinafter are for description and explanation only. The information contained in the Manual is subject to change, without notice, due to firmware updates or other reasons. Please find the latest version in the company website (<http://overseas.hikvision.com/en/>). Please use this user manual under the guidance of professionals.

HIKVISION Trademarks Acknowledgement and other Hikvision's trademarks and logos are the properties of Hikvision in various jurisdictions. Other trademarks and logos mentioned below are the properties of their respective owners.

CE This product and - if applicable - the supplied accessories too are marked with "CE" and comply therefore with the applicable harmonized European standards listed under the RE Directive 2014/53/EU, the EMC Directive 2014/30/EU, the RoHS Directive 2011/65/EU.

The Input voltage should meet both the SELV (Safety Extra Low Voltage) and the Limited Power Source according to the IEC60950-1 standard. Please refer to technical specifications for detailed information.

2012/19/EU (WEEE directive): Products marked with this symbol cannot be disposed of as unsorted municipal waste in the European Union. For proper recycling, return this product to your local supplier upon the purchase of equivalent new equipment, or dispose of it at designated collection points. For more information see: www.recyclethis.info

Legal Disclaimer

TO THE MAXIMUM EXTENT PERMITTED BY APPLICABLE LAW, THE PRODUCT DESCRIBED, WITH ITS HARDWARE, SOFTWARE AND FIRMWARE, IS PROVIDED "AS IS", WITH ALL FAULTS AND ERRORS, AND HIKVISION MAKES NO WARRANTIES, EXPRESS OR IMPLIED, INCLUDING WITHOUT LIMITATION, MERCHANTABILITY, SATISFACTORY QUALITY, FITNESS FOR A PARTICULAR PURPOSE, AND NON-INFRINGEMENT OF THIRD PARTY. IN NO EVENT WILL HIKVISION, ITS DIRECTORS, OFFICERS, EMPLOYEES, OR AGENTS BE LIABLE TO YOU FOR ANY SPECIAL, CONSEQUENTIAL, INCIDENTAL, OR INDIRECT DAMAGES, INCLUDING, AMONG OTHERS, DAMAGES FOR LOSS OF BUSINESS PROFITS, BUSINESS INTERRUPTION, OR LOSS OF DATA OR

DOCUMENTATION, IN CONNECTION WITH THE USE OF THIS PRODUCT, EVEN IF HIKVISION HAS BEEN ADVISED OF THE POSSIBILITY OF SUCH DAMAGES.

REGARDING TO THE PRODUCT WITH INTERNET ACCESS, THE USE OF PRODUCT SHALL BE WHOLLY AT YOUR OWN RISKS. HIKVISION SHALL NOT TAKE ANY RESPONSIBILITIES FOR ABNORMAL OPERATION, PRIVACY LEAKAGE OR OTHER DAMAGES RESULTING FROM CYBER ATTACK, HACKER ATTACK, VIRUS INSPECTION, OR OTHER INTERNET SECURITY RISKS; HOWEVER, HIKVISION WILL PROVIDE TIMELY TECHNICAL SUPPORT IF REQUIRED.

SURVEILLANCE LAWS VARY BY JURISDICTION. PLEASE CHECK ALL RELEVANT LAWS IN YOUR JURISDICTION BEFORE USING THIS PRODUCT IN ORDER TO ENSURE THAT YOUR USE CONFORMS THE APPLICABLE LAW. HIKVISION SHALL NOT BE LIABLE IN THE EVENT THAT THIS PRODUCT IS USED WITH ILLEGITIMATE PURPOSES.

IN THE EVENT OF ANY CONFLICTS BETWEEN THIS MANUAL AND THE APPLICABLE LAW, THE LATER PREVAILS.

UD121838

English

Diagram Reference

1 Components and Beeps

Indicator

Set ➡ Solid Green: No Zone Fault in Operation Mode
Solid Red: Zone Fault in Operation Mode
Flashed Green: Not in the Operation Mode

Fault ➡ Solid Orange: System Fault Off: No Fault

Network ➡ Solid Green: All Enabled Channels Connected Normally
Off: Part of or All Enabled Channels Connected Abnormally

Armed/Disarmed ➡ Solid Blue: Armed Off: Disarmed

Alarm ➡ Flashed Red: Alarm Occurred
Solid Red: Tamper Alarm Off: No Alarm

Key

Query Project Bypass Scroll Up
Fire Panic One-Push to Arm Scroll Down

Beeps

One Beep ➡ Pressing keys/command timed out or too long.
Two Beeps ➡ Successful operation/Report uploaded.
Five Beeps ➡ Failed operation/Failed to upload the report in 60s.
Continuous Beeping For Two Seconds ➡ Fault Prompt.
Slowly Continuous Beeps ➡ Entry/Exit Delay, more than 10s.
Rapidly Continuous Beeps ➡ Entry/Exit Delay, less than 10s.
Rapid Beeps ➡ Zone Alarm/Keypad not registered.
Three Long Beeps and Two Short Beeps ➡ Keypad tampered.
Three Beeps ➡ Keypad registered.

2 Keypad Address Settings

Configure the address via DIP switch of the keypad before powering on the system. The address should be in the range of 0 to 31. The binary value shown in the diagram is 00111, which means the decimal value is 7. So the address of the keypad is 7.

3 Keypad Wiring and Installation

a. Dimension

b. Disassemble the keypad

Loosen the screw, and pry the gap of the edge with a straight screw driver to disassemble the keypad. Remove the rear panel.

c. Wiring

Route the cables through the cable hole of the rear panel, and connect the cables to the corresponding terminals.

★ If you need to route the bottom of the panel, remove the sheet of the side opening. The keypad functions vary depending on the model of device.

d. Install Keypad

1. Secure the mounting plate on the gang box/wall with supplied screws. ★ It is required to insert the screw for tamper alarm.
2. Fasten the keypad body on the plate.
3. Tighten the screw on the bottom to fix the keypad on the mounting plate and complete the installation.

4 Keypad Operation Commands

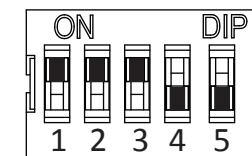
Function	Description	Command
Programming/Editing Password	Control Panel Programming	[Installer Password] [*] [0] [0]
	Exit Operation	[*] [0]
	Administrator Password	[Administrator/Operator 001] Password [*] [0] [0]
	User No. (4-digit) [0]	[New Password] [0]
	[New Password] [0]	
Testing	Testing	[Installer Password] [*] [0] [0] [0] [0]
	Exiting Testing	[Installer Password] [*] [0] [0] [0] [0]
	Alarm Center Testing	[Password] [*] [0] [0] [0] [0]
	Project Mode	[Password] [Project] [0] [0] [0] [0]
	Exiting Project Mode	[*] [0]
Arming/Disarming	Normal (Away) Arming/Disarming	[Password] [0]
	Instant Arming	[Password] [*] [0] [0]
	Stay Arming	[Password] [*] [0] [0]
Clearing Alarm	Clearing Under Arming Status	[Password] [*] [0] [0]
Keyfob	Add Keyfob	[Password] [*] [0] [0] [Keyfob No.] [Sub-system No.] [0]
	Delete Appointed Keyfob	[Password] [*] [0] [0] [Keyfob No.] [0]
	or [Password] [*] [0] [0] [0] + press the keyfob	
	Delete All Keyfobs	[Password] [*] [0] [0] [0]
Bypass	Bypass Zone(n)	[Bypass] [0] [0] [0] [0] [0] [0]
	mm is the zone No.	
Keypad Settings	Enabling/Disabling Keypad Tone	[*] [0] [0] [0] [0]
	Enabling/Disabling Fault Prompt	[*] [0] [0] [0] [0]
	LCD Backlight Control	[*] [0] [0] [0] [0] [0] [0]
	LCD Backlight Disabling	[*] [0] [0] [0]

Specification

	DS-PK-L	DS-PK-LR	DS-PK-LRT	DS-PK-LRTE
Numeric Key	12 Keys: 0 to 9, *, #			
Function Key	8 keys: Project/Query/Bypass/On-push to arm/Fire/Panic/Scroll Up/Scroll Down			
Indicator	Fault (Orange), Network (Green), Alarm (Red), Armed/Disarmed (Blue), Set (Red/Green Dual Color)			
Screen	LCD			
Input	N/A	N/A	N/A	2 Alarm Inputs
Output	N/A	N/A	N/A	1 Relay Output
Keypad	N/A	Two-Way Keypad	Two-Way Keypad	Two-Way Keypad
Card Reading	N/A	N/A	Supported	Supported
Tamper Switch	1			
RS-485 Interface	1			
Current & Power	12 VDC/0.15 A			
Consumption	1.8 W			
Operation Temperature	-10 °C to +55 °C			
Operation Humidity	10% to 90%			
Weight	272 g (0.60 lb)			

2

E.G



low ← high

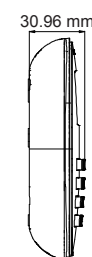
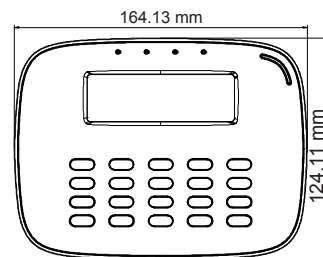
BIN=00111

DEC=7

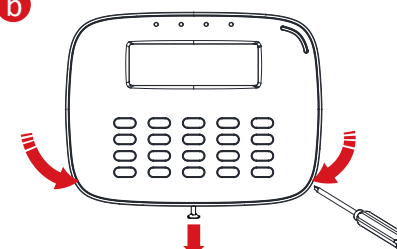
ADD=7

3

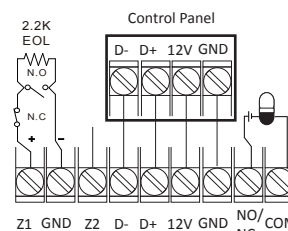
a



b

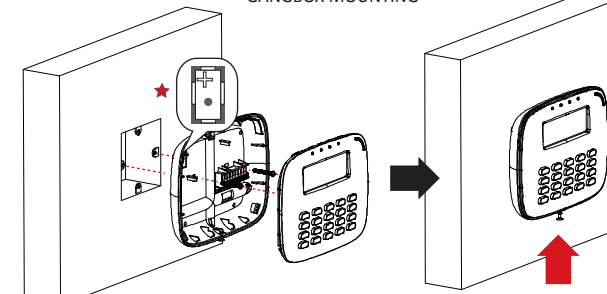


c



d

GANGBOX MOUNTING



WALL MOUNTING

